



Silver Sport Full-Reclining Wheelchair Single Axle

HCPCS: K0001 / E1226

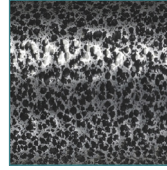


FIGURE A

- Hydraulic reclining mechanism allows for infinite adjustments up to 180°
- Arms have support extension for reclining position
- Nylon upholstery is comfortable, lightweight and easy-to-clean
- Carbon Steel frame with silver vein finish is attractive, and easy-to-maintain (Figure A)
- Composite Mag-style wheels are lightweight and maintenance free
- 8" front casters
- Padded armrests provide added patient comfort
- Wheels set back on frame prevents tipping
- Precision sealed wheel bearings in front and rear ensure long lasting performance and reliability
- Rear anti-tippers standard
- Headrest extension with cushioned head immobilizer standard
- Comes standard with swing-away elevating leg rests
- Metal foot plates
- Comes with push to lock wheel locks

PRODUCTS	Description
SSP16RBDDA	Silver Vein, 1/cs
SSP16RBDFA	Silver Vein, 1/cs
SSP18RBDDA	Silver Vein, 1/cs
SSP18RBDFA	Silver Vein, 1/cs
SSP20RBDDA	Silver Vein, 1/cs
SSP20RBDFA	Silver Vein, 1/cs

SPECIFICATIONS	Description
Width Open with 16" Seat	23"
Width Open with 18" Seat	25"
Width Open with 20" Seat	28"
Width Closed	12"
Height	50"
Seat-to-Floor Height	20.5"
Back Height	21" 31"
Seat Depth	16"
Length with Riggings	50"
Product Weight with 16" Seat	59 lbs.
Product Weight with 18" Seat	60 lbs.
Product Weight with 20" Seat	61 lbs.
Carton Shipping Weight with 16" Seat	66 lbs.
Carton Shipping Weight with 18" Seat	67 lbs.
Carton Shipping Weight with 20" Seat	67.5 lbs.

SPECIFICATIONS**Description**

Weight Limit with 16" Seat	300 lbs.
Weight Limit with 18" Seat	300 lbs.
Weight Limit with 20" Seat	350 lbs.
Warranty	Limited Lifetime

ACCESSORIES**Description**

STDS806	Anti-Fold Bar, 1/ea
STDS4Y4712	Anti-Tippers Without Wheels, 1/ea
STDS831	Heel Loops, 1/bx
STDS850	Seat Belts, Auto-Clasp Type Closure, 1/ea
STDS851	Seat Belts, Hook and Loop Fastener Type Closure, 1/ea
STDS855	Seat Belts, Auto-Clasp Type Closure, Bariatric, 1/ea
STDS856	Seat Belts, Hook and Loop Fastener Type Closure, Bariatric, 1/ea
STDS1034	Wheelchair Cane/Crutch Holder, 1/ea

PARTS**Description**

STDS806	Anti-Fold Bar, 1/ea
STDS831	Heel Loops, 1/bx
STDS4Y4712	Anti-Tippers Without Wheels, 1/ea
STDS850	Seat Belts, Auto-Clasp Type Closure, 1/ea
STDS851	Seat Belts, Hook and Loop Fastener Type Closure, 1/ea
STDS855	Seat Belts, Auto-Clasp Type Closure, Bariatric, 1/ea
STDS856	Seat Belts, Hook and Loop Fastener Type Closure, Bariatric, 1/ea
STDS1034	Wheelchair Cane/Crutch Holder, 1/ea
STDS4Y4726	1/ea
STDS4Y4724	1/ea
STDS4Y4713	1/ea
STDS4Y4725	1/ea
STDS4Y4722	1/ea
STDS4Y4700	1/ea
STDS4Y4718	1/ea
STDS4Y4716	1/ea
STDS4S4716	1/ea
TRHG	1/bx
STDS4Y4702R	1/ea
STDS4Y4702L	1/ea
STDS4Y4715	1/ea
STDS4Y4720	1/ea
STDS4Y4714	1/ea
STDS4Y4719	1/ea
STDS3006	1/ea
STDS4Y4704R	1/ea
STDS4Y4704L	1/ea
STDS8M481R	1/ea
STDS4Y4707	1/ea
STDS4Y2431	1/pr
STDS4Y4729	1/pkg
STDS4Y4712	1/ea
STDS4Y4730	1/ea
STDS3J2430	1/ea
STDS3J2431	1/ea
STDS3J2432	1/ea
STDS3J4533	1/ea
STDS4Y4706	1/ea
STDS4Y4706R	1/ea