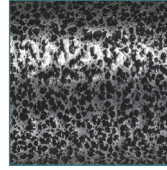


Silver Sport VI Heavy Duty Wheelchair



INSET A

- Powder-coated reinforced steel frame with silver vein finish (Figure A)
- Embossed vinyl upholstery is durable, lightweight, and easy-to-clean
- Durable urethane tires on composite wheels are low maintenance
- Padded armrests are detachable, and available in desk or full length
- Comes with swing-away footrests or elevating legrests with tool-free adjustable length riggings
- Push-to-lock wheel locks

PRODUCTS	Description
SSP618DDA-ELR	Silver Sport VI 18 DetDskArm ElvLg, 1/cs
SSP618DDA-SF	Silver Sport VI 18 DetDskArm SwgFt, 1/cs
SSP618DFA-ELR	Silver Sport VI 18 DetFlIArm ElvLg, 1/cs
SSP618DFA-SF	Silver Sport VI 18 DetFlIArm SwgFt, 1/cs
SSP620DDA-ELR	Silver Sport VI 20 DetDskArm ElvLg, 1/cs
SSP620DDA-SF	Silver Sport VI 20 DetDskArm SwgFt, 1/cs
SSP620DFA-ELR	Silver Sport VI 20 DetFlIArm ElvLg, 1/cs
SSP620DFA-SF	Silver Sport VI 20 DetFlIArm SwgFt, 1/cs

SPECIFICATIONS	Description
Width Open with 18" Seat	26"
Width Open with 20" Seat	28"
Length	42"
Height	36"
Width Closed	12.5"
Seat-To-Floor Height	17.5" - 19.5"
Back Height	16"
Seat Depth	16"
Length with Rigging	42"
Product Weight without Rigging 18", 20"	36 lbs. 37 lbs.
Carton Shipping Weight with 18" Seat	49 lbs.
Carton Shipping Weight with 20" Seat	50 lbs.
Weight Limit	300 lbs.
Warranty	Limited Lifetime on Frame

ACCESSORIES	Description
STDS801GT	Wheel Lock Extension, 1/ea
STDS806	Anti-Fold Bar, 1/ea
STDS818	Anti-Tippers without Wheels, Chrome, 1/pr
WASR	Limb Support, Right, 1/ea

ACCESSORIES

Description

WASL	Limb Support, Left, 1/ea
STDS850	Seat Belts, Auto-Clasp Type Closure, 1/ea
STDS851	Seat Belts, Hook and Loop Fastener Type Closure, 1/ea
STDS855	Seat Belts, Auto-Clasp Type Closure, Bariatric, 1/ea
STDS856	Seat Belts, Hook and Loop Fastener Type Closure, Bariatric, 1/ea
STDS833N	Anti-Tippers With Wheels Black, 1/pr
STDSSSP-AA	Amputee adapters for Silversport 2, 1/pr